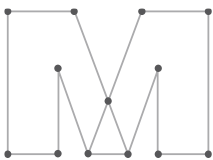


COMPANY PROFILE

www.metroplan.net



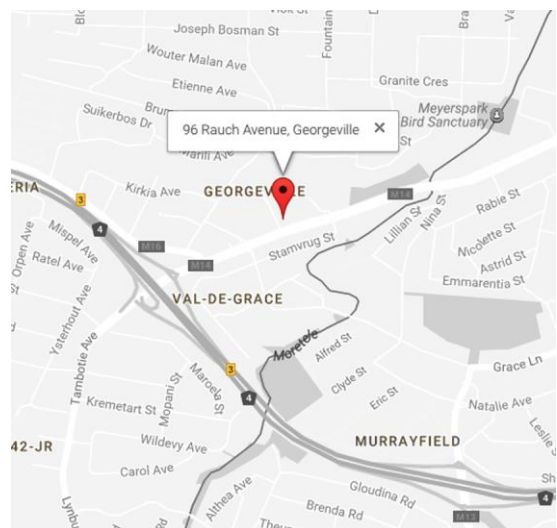


Metroplan Town Planners and Urban Designers is an established town planning consultancy with over 30 years' experience in the field of planning and development. The company is based in Georgeville, Pretoria, whilst providing planning related services throughout South Africa.

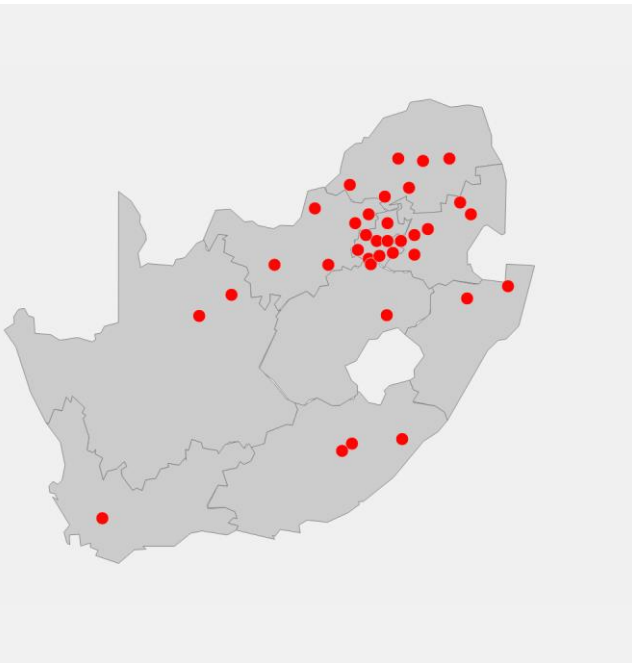
By employing knowledgeable and competent staff we strive to identify, serve and satisfy the needs and expectations of our clients in both public and private sectors. Metroplan became a 51 % Black Owned Company in 2017 with the incorporation of the Siyandisa Trust into the ownership structure.

COMPANY DETAILS

Physical Address:	96 Rauch Avenue, Georgeville, Pretoria, 0184
Postal Address:	P.O. Box 916, Groenkloof, Pretoria, 0027
Telephone:	(012) 804 2522
Fax:	(012) 804 2877
E-mail:	mail@metroplan.net
SACTRP Registration:	0322/2017
Company Registration:	1992/06580/07
VAT Registration:	4060189828
Central Supplier Database:	MAAA0021639



COMPANY FOOTPRINT



OUR MISSION

Metroplan is a firm of professional Town Planners and Urban Designers which is in business to identify, serve and satisfy the needs and expectations of its clients in both the public and private sectors in the composite fields of planning and development.

Metroplan employs a strategic and developmental approach for every planning action that the company is involved in, with a specific emphasis on conducting work in a socially and environmentally responsible manner.

Through the innovative and creative use of its expertise, knowledge and cutting-edge technology, the company will continue to provide a service of the highest quality, thereby satisfying the varying needs of relevant stakeholders.

AFFILIATIONS

The South African Council for Town and Regional Planners (SACPLAN)

The South African Association of Consulting Professional Planners (SAACPP)

The South African Institute for Town and Regional Planners (SAPI)

The Urban Design Institute of South Africa (UDISA)



AFFIRMATIVE ACTION POLICY

Metroplan Town Planners and Urban Designers in collaboration with Siyandisa Trust, an Investment Trust which is 100% black owned, categorizes as a Qualifying Small Enterprise (QSE) with 51,22% Black Ownership of which 30.73% constitutes Black Women Ownership and 23.05% Black Youth. Based on the current Broad Based Black Economic Empowerment Verification Certificate (RS-14939-0722-C34) Metroplan classifies as a Level 4 Broad-Based BEE Contributor with a Recognition Level of 100%.



PLANNING APPROACH

Planning and development have entered a new dimension with a shift in emphasis to sustainability and the integration and maximization of scarce resources. Metroplan has not only recognized the change but is a pro-active participant, introducing innovative and applicable planning and development solutions. Integrating the expectations of the community and the approving authority by a process of inter-active participation is a declared policy of the firm. Metroplan's pro-active approach contributes to the formulation of a social, economic, environmental and political acceptable planning framework that stimulates policy changes. Metroplan has accepted the challenge to remain sensitive to the continuing changes occurring in South Africa, and to ensure that needs and expectations of its clients are met and exceeded.

MULTI-DISCIPLINARY APPROACH

As part of client services, Metroplan analyses the multi-disciplinary requirements of a specific project, advise the client accordingly and assists in the establishment of a multi-disciplinary team to effectively expedite the project. The professionals include inter alia consulting engineers, land surveyors, architects, research institutes, development agencies and environmentalists.

RESOURCES

Metroplan makes extensive use of cutting-edge technology and software packages to have an advantage in a competitive market. These facilities together with the highly experienced staff ensure a workforce capable and able to execute projects in an efficient and competent manner.

THE METROPLAN TEAM CONSISTS OF



DEON BESTER

Professional Planner
& Director



VILJOEN DU PLESSIS

Professional Planner
& Director

Metroplan Town Planners and Urban Designers was established in Pretoria during 1979. To meet the needs of our clients, the company has assembled a team of qualified and registered Town Planners with a range of experience and abilities to cater for an array of town planning and development related services.



**MARINDA
SCHOONRAAD**

Professional Planner
& Urban Designer



SIMONÉ OLIVIER

AutoCAD Operator



INA JACOBS

Professional Planner



**THAPELO
MODISE**

Candidate Planner



REUBEN MENTZ

Professional Planner



STEVE MANAMELA

Candidate Planner



HARRIET JOUBERT

Planning Assistant



RIANA MALAN

Office Manager



BELA SANTU

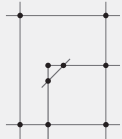
Office Support



MOSES ZUMBA

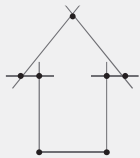
Office Support

Metroplan concentrates on providing a comprehensive range of professional and appropriate skills and expertise required to undertake any aspect of the planning and development field. Services offered include inter alia the following:



LAND USE MANAGEMENT

- Township Establishments
- Rezoning/Amendment of Land Use Schemes
- Removal of Restrictive Title Conditions
- Subdivisions
- Consolidations
- Consent Uses
- Permissions
- Representation at Municipal Planning Tribunal Hearings and Appeals



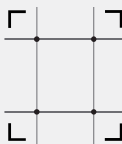
STRATEGIC SPATIAL PLANNING

- Local, Regional and Metropolitan Spatial Development Frameworks
- Housing Development Frameworks
- Open Space Frameworks



URBAN DESIGN

- Urban Design Frameworks
- Precinct Plans



PROPERTY DEVELOPMENT

- Feasibility/Due Diligence Investigations and Studies
- Development Risk Assessments
- Site Clearance



POLICY FORMULATION & RESEARCH

- Housing and Density Policies
- Urban Renewal and Upgrading
- Planning and Layout Standards
- Compilation of Land Use Management By-laws

LAND USE MANAGEMENT



Montana Ext. 182
Township Establishment



Booyens Ext. 4
Township Establishment



Atteridgeville Ext. 46
Township Establishment



Mabopane Ext. 12
Township Establishment



Ashlea Gardens, Erf 206
Rezoning



Pienaarspoort Ext. 20
Township Establishment



Jan Niemandpark, Erf R/3/110
Rezoning



Tanganani Ext.14
Township Establishment



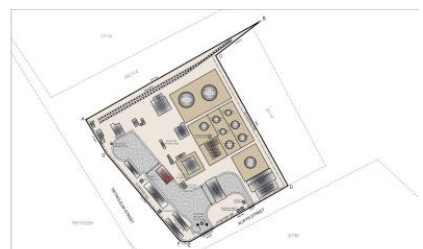
Kokosi Ext. 99
Township Establishment



Menlo Park, Erf 541
Rezoning and Removal of Restrictions



Brooklyn, Erf 4/790
Rezoning



Waltloo, Erf 2/114
Rezoning

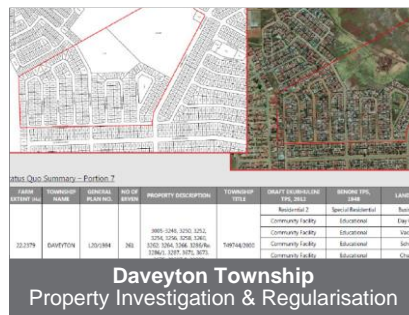
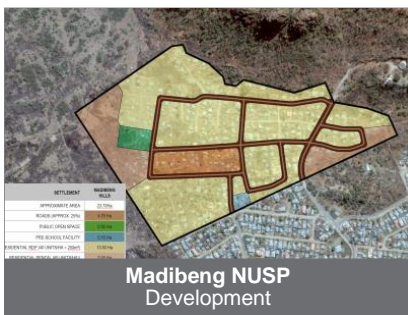
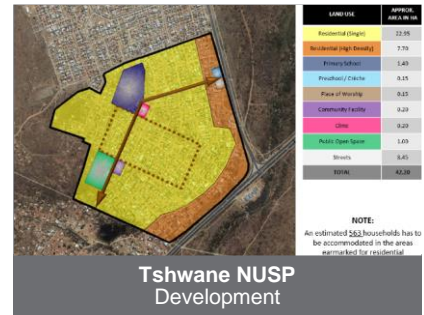
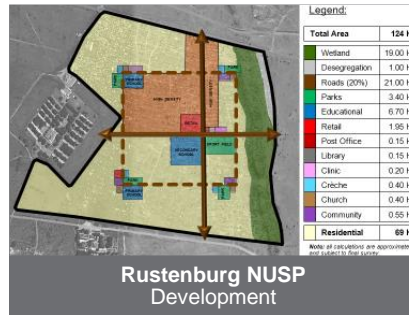


Pienaarspoort Ext. 21
Township Establishment

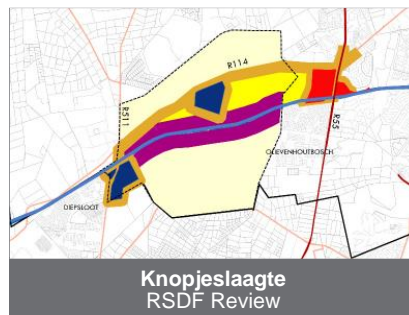
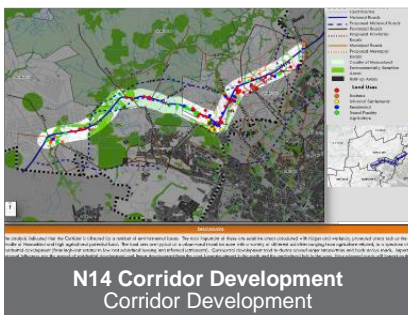
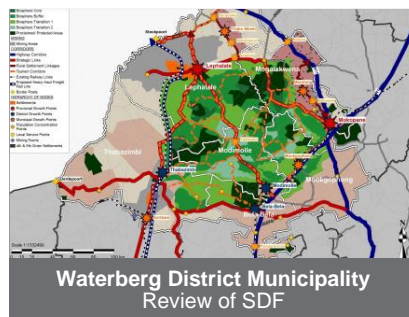
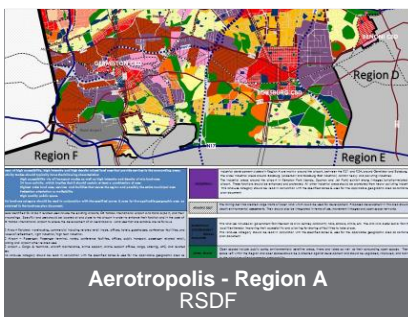


Eldorette Ext. 53
Township Establishment

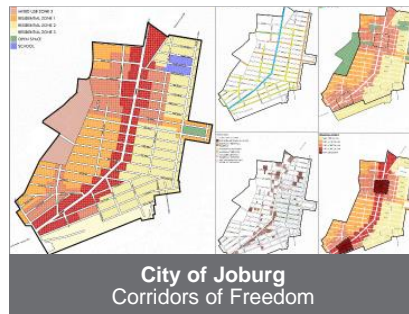
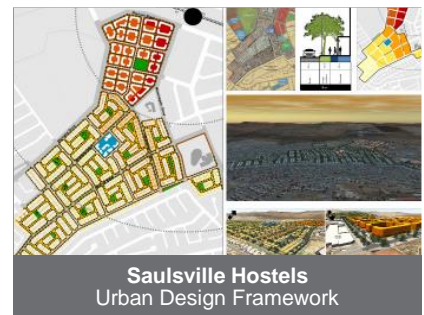
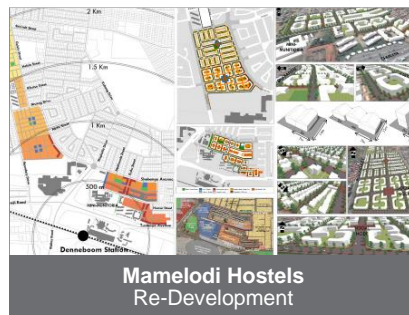
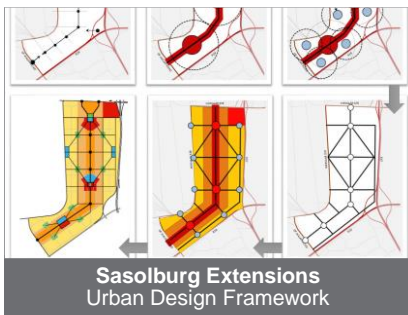
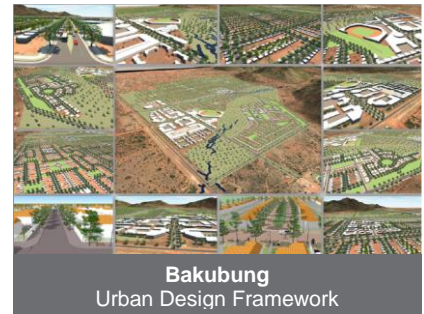
PROPERTY DEVELOPMENT



STRATEGIC SPATIAL PLANNING



URBAN DESIGN



POLICY FORMULATION AND RESEARCH



LAND USE MANAGEMENT

ADDITIONAL DWELLING			
Kameeldrift 313-JR, Portion 322	2022	Current	Private Individual
Derdepoort 326-JR, Portion 514	2022	Current	Private Individual
Tweedracht 516-JR, Portion 23	2020	Completed	Brookfield Investment 362 (Pty) Ltd
Moreleta Park, Erf 1585	2016	Completed	Private Individual
Wonderboom AH, Holding 122	2016	Completed	Private Individual
Waverley, Portion 2 of Erf 41	2021	Completed	Anton Pretorius Familie Trust

CANCELLATION AND REGISTRATION OF SERVITUDES			
Hazelwood, Erf 154	2022	Current	The Club Retail Park (Pty) Ltd
The Hills Ext 4, Erf 357 & 358	2021	Completed	The Hills Homeowners Association
Waterkloof, Remainder of Erf 707	2021	Completed	PMP Property Trust
Louwlandia Ext. 35, Erven 923 to 925	2017	Completed	Farmwise Marketing (Pty) Ltd
Doornfontein, Erven 356 and 357	2012	Completed	Mobile Telephone Networks (Pty) Ltd (MTN)
Hazelwood, Erf 160	2022	Current	The Club Retail Park (Pty) Ltd

CONSENT USE			
Silverton, Portion 56 of Erf 477	2022	Current	Azlanest Guesthouse (Pty) Ltd
Groenkloof, Erf 127	2022	Completed	Roodewal Investments (Pty) Ltd
Werkendam, Portion 9	2021	Current	Ellisras Vleismark CC
Lynnwood, Erf 118	2020	Completed	Lynnwood Trust
Trevenna, Portion 1 of Erf 11	2020	Completed	Europa Groove
Chartwell Agricultural Holdings, Holding 88	2020	Completed	Braodacres High School (Pty) Ltd
Equestria Ext 148, Erven 609 to 658	2020	Completed	Avignon (Equestria HOA)
Syferfontein (Organic Market), Part of the Remainder of Portion 77 and Part of Portion 184	2020	Current	Impande Consulting Engineers
Soweto (Naledi) Part of the Remainder	2020	Current	Impande Consulting Engineers
Wynberg (Triangle), Erf 183 and 184	2020	Current	Impande Consulting Engineers
Chartwell Agricultural Holdings, Portion 2 of Holding 249	2020	Completed	Braodacres High School (Pty) Ltd
Pierre van Ryneveld, Erven 78 and 79	2020	Completed	Private Individual
Capital Park, Portion 1 of Erf 1443	2020	Current	Private Individual

Leeuwfontein, Solar Power Plant	2020	Current	Rabot Eiendomme (Pty) Ltd
Pretoria Town and Townlands 351-JR, Portion 461	2019	Current	Associacao da Comunidade Portuguesa de Pretoria
Montana Tuine Ext 67, Erven 1773 to 1775	2019	Completed	Lumibiz (Pty) Ltd
Soshanguve East Ext 10, Erf 7502	2019	Completed	Sosh Varsity Lodge
Constantia Park, Erf 242	2018	Current	Rey's Gymnastic
Boksburg, Erven 642 to 646 and 1574 to 1576	2018	Completed	KWP Create Architects
Pretoria, Remainder of Erf 111	2018	Completed	Propoganda (Pty) Ltd
CONSOLIDATION			
Hazelwood, Erven 3, 150 and 161	2022	Current	The Club Retail Park (Pty) Ltd
Rosslyn Ext 1, Erven 128, 129 and 75	2022	Current	The South African Breweries (Pty) Ltd
Kameelfontein 297 JR, Portion 111	2021	Current	Kameeldrift Voere (Pty) Ltd
Montana Tuine Ext 52, Erven 1678 and 1679	2021	Completed	Zambezi Country Estate HOA
Hazelwood, Erven 3, 150 and 161	2021	Completed	The Club Retail Park (Pty) Ltd
Booyens, Portions 3 and 4 of Erf 98	2021	Completed	Coca-Cola Beverages SA (Pty) Ltd
Villieria, Remainder of Portion 1 of Erf 63 and Remainder of Erf 63	2021	Current	Kyriazis Freres Property CC
Moreletapark Ext 9, Erven 1301 and 1302	2021	Current	Noag se Dierekliniek CC
Tunney Ext 5, Erven 61, and 62	2021	Completed	Reunert Limited
Jukskei View Ext 40, Erven 4123 and 4124	2021	Completed	Modern Urban Projects (Pty) Ltd
Pretoria North, Erf 373, Remainder of Erf 355, Remainder of Erf 354, Portion 1 of Erf 354, and Remainder of Erf 372	2021	Current	New Day Properties CC
Garsfontein Ext 2, Erven 746 to 750	2021	Current	Private Individual
Constantia Park Ext 3, Erf 881	2021	Current	Realtime Investments 165 CC
Waltloo, Remainder of Erf 88 and Remainder of Portion 1 of Erf 88	2020	Completed	Agchem Property (Pty) Ltd
Clayville, Portions 15, 16, 61, 62, 63 of Erf 1015	2020	Completed	Coca-Cola Beverages SA (Pty) Ltd
Hazelwood, Erven 3, 150 and 161	2020	Completed	The Club Retail Park (Pty) Ltd
Garsfontein Ext 8, Erven 2182 to 2184	2020	Current	Achorprops 158 (Pty) Ltd
Rosslyn, Erf 145	2020	Current	The South African Breweries (Pty) Ltd
Arcadia, Portions 2 and 3 of Erf 1478	2019	Current	Welkovics Family Trust
Montana Tuine Ext 67, Erven 1773 to 1775	2019	Completed	Lumibiz (Pty) Ltd
Rietfontein, Erven Remainder of Portion 1 of Erf 678, Portion 9 of Erf 678, and Portion 10 of Erf 678	2019	Completed	Private Individual
Kungwini Country Estate, Portions 39 and 40 of Erf 14	2019	Completed	Oranja Trust
Soshanguve District Hospital, Portion 1 of Erf 1266	2019	Current	COEGA

Parkhurst, Erven 1982 and 1984	2019	Current	Zelpy 1497 (Pty) Ltd
Wierdapark, Erven 1493 and 1494	2018	Completed	Audit BEE Consult
Lynnwood, Erf 1064 (Safari Office Park)	2018	Current	Safari Investments
Boksburg, Erven 642 to 646 and 1574 to 1576	2018	Completed	KWP Create Architects
Rosslyn, Erven 77 and 144	2017	Current	The South African Breweries (Pty) Ltd
New Redruth, Remainder of Portion 1 of Erf 1078	2016	Completed	Barloworld Auto (Pty) Ltd
Alrode Ext. 2, Erven 1452, 301, 1595, 314, 16303, Portion 1 of Erf 340 and Remainder of Erf 300	2016	Current	The South African Breweries (Pty) Ltd
Rosslyn East, Erven 183 and 184	2016	Completed	Moorddrift Family Trust
Midstream Estate Ext. 63, Erven 4918 and 4919	2016	Completed	Cal Aderson Trust
Hazelwood, Erven 99, 100 and 101	2016	Current	Pohl and Maritz (Pty) Ltd
Pretoria - Christoffel Street	2016	Completed	TMM Rental (Pty) Ltd
Arcadia, Portion 1 of Erf 502, Remainder of Erf 502, Remainder 1 of Erf 505, Remainder of Erf 505, and Remainder 1 of Erf 1028	2015	Completed	Tri-Star Development Services (Pty) Ltd
Devland Ext. 2, Erven 88, 89, 90 and 884	2013	Completed	The South African Breweries (Pty) Ltd
Doornfontein, Erf 355 (356, 357, 396, 398, 632 and 670)	2012	Completed	Mobile Telephone Networks (Pty) Ltd (MTN)
Babelegi, Erven 218, 219 and 252	2011	Current	Nestle (South Africa) (Pty) Ltd
Secunda, Erven 8296 and 8318	2011	Completed	Purple Plum 101 (Pty Ltd
Tzaneen - SAB	2010	Completed	The South African Breweries (Pty) Ltd

LAND ACQUISITION

Bronkhorstspuit, Erf 120	2016	Current	Aquaview Homeowners Association
Stretford Ext. 2, Erf 5033	2016	Completed	L and R Welding and Tools Suppliers
Wonderboom	2016	Current	S and S Trust
Dorandia Ext. 8	2016	Current	S and S Trust
Farm Grootverlangen 409-IS, Portions 2, 4 and 7	2015	Completed	Sky Village Properties CC
Alrode Ext 2, Remainder of Erf 224	2015	Current	The South African Breweries (Pty) Ltd

PERMISSION

Annlin, Erf 254	2023	Current	Private Individual
Kameeldrift 313 JR, Portion 322	2022	Current	Private Individual
Mamelodi Ext 13, Erf 40827	2022	Current	Safari Investments RSA Ltd
Birch Acres Ext 3, Erf 889	2022	Current	Indigo Kulani Group (Pty) Ltd
Groenkloof, Erf 127	2022	Current	Roodewal Investments (Pty) Ltd

Hatfield, Portion 3 of Erf 173	2022	Current	Natsure Prop Investments Holding Co (Pty) Ltd
Rietfontein, Remainder of Erf 206	2021	Current	Private Individual
Derdepoort 326 JR, Portion 514	2021	Current	Private Individual
Hartbeesdraai 620 IR, Portion 25	2021	Current	Gaatwiel Trust
The Hills Ext 4, Erf 358	2021	Current	The Hills HOA (NPC)
Brooklyn, Erf 657	2021	Completed	Private Individual
Waverley, Portion 2 of Erf 41	2021	Completed	Anton Pretorius Familie Trust
Irene, Erf 199	2021	Completed	HCO Consulting
Pretoria, Erf 3554	2021	Current	Nilacel Investments (Pty) Ltd
Rosslyn Ext 1, Portion 1 of Erf 78	2021	Current	The South African Breweries (Pty) Ltd
Murrayfield, Erf 510	2021	Current	Private Individual
Lynnwood Glen, Erf 193	2020	Current	Private Individual
Mnandi Agricultural Holdings, Holding 140	2019	Current	Hazgar (Pty) Ltd
Phillip Nel Park, Remainder of Erf 257	2019	Current	Arch-Neer Professionals (Pty) Ltd
Kromdraai 209- JR, Remainder of Portion 2, and Portion 4	2018	Current	Vergenoeg Mining Company (Pty) Ltd
Newlands, Erf 219	2018	Current	Pet Pronto Consulting Rooms Inc

REMOVAL OF CONDITIONS

Queenswood, Erf 701	2023	Current	Private Individual
Lynnwood Glen, Erf 787	2023	Completed	Private Individual
Lynnwood, Erf 1082	2022	Completed	Emikamix (Pty) Ltd
Menlo Park, Remainder of Erf 287	2022	Current	Private Individual
Meyerspark, Erf 217	2022	Current	Private Individual
Brooklyn, Erven 558 and 560	2022	Current	Private Individual
Waterkloof Ridge, Remainder of Erf 937	2022	Current	Enosis Properties (Pty) Ltd
Lynnwood, Remainder of Erf 546	2022	Current	Private Individual
Clubview Ext 6, Erf 641	2021	Current	Private Individual
Waterkloof, Erf 827	2021	Completed	Dr. M.A. Wiesner Dental Surgeon Inc
Val-de-Grace, Erf 369	2021	Completed	Private Individual
Moreletapark Ext 9, Erven 1301 and 1302	2021	Current	Noag se Dierekliniek CC
Garsfontein Ext 2, Erven 746 to 750	2021	Completed	Private Individual
Menlo Park, Portion 1 of Erf 224	2020	Completed	Private Individual
Hazelwood, Erven 3 and 161	2020	Current	The Club Retail Park (Pty) Ltd

Silverton, Remainder of Erf 1958	2020	Completed	Private Individual
Garsfontein Ext 8, Erven 2182 to 2184	2020	Current	Achorprops 158 (Pty) Ltd
Tiegerpoort 371-JR, Portion 314	2020	Current	Clear Choice Builders (Pty) Ltd
Waterkloof, Remainder of Erf 707	2020	Completed	PMP Property Trust
Tweedracht 516 JR, Portion 23	2020	Completed	Allworth Family Trust
Leeuwfontein, Solar Power Plant	2020	Completed	Rabot Eiendomme (Pty) Ltd
Derdepoort 326-JR, Portion 514	2020	Current	Pretoria Boedels MKPY (BPK)
Mnandi Agricultural Holdings, Holding 140	2019	Completed	Hazgar (Pty) Ltd
Lyttleton, Remainder of Erf 1800	2019	Completed	Private Individual
Wonderboom South, Remainder of Erf 1096	2019	Completed	Private Individual
Sjambok Zijn Oudekraal 258 JR	2019	Current	Maponya Investment Holding
Bedworth Park, Vereeniging, Erf 52	2019	Completed	Private Individual
Arcadia, Portion 3 of Erf 509	2019	Completed	Thahirwa Properties (Pty) Ltd
Lynnwood Glen, Erf 2	2019	Current	Drastion CC
Soshanguve District Hospital, Portion 1 of Erf 1266	2019	Current	COEGA
Alphenpark, Erf 25	2019	Completed	Private Individual
Mabopane-C, Erf 1627	2019	Completed	Diemont Incorporated
Soshanguve East Ext 10, Erf 7502	2019	Completed	Sosh Varsity Lodge
Wierdapark, Erven 1493 and 1494	2018	Current	Audit BEE Consult
Lynnwood, Erf 46	2018	Completed	Private Individual
Menlo Park, Erf 243	2018	Current	Marko Kruger Familie Trust
Menlo Park, Erf 414	2018	Completed	CDT Homes (Pty) Ltd
Maroelana, Erf 84	2018	Current	Private Individual
Waterkloof Ridge, Erf 277	2018	Completed	Nanox Architects Trust
Tyger Valley 334-JR, Remainder of Portion 50	2018	Completed	Private Individual
Waterkloof Park, Portion 2 of Erf 18	2018	Completed	CDT Homes (Pty) Ltd
Waterkloof, Erf 1187	2018	Completed	Quorum Property Group
Lynnwood, Erf 1064 (Safari Office Park)	2018	Current	Safari Investments
Queenswood, Erf 420	2018	Completed	Private Individual
Menlo Park, Erf 430	2018	Completed	CDT Homes (Pty) Ltd
Menlo Park, Remainder of Erf 604	2018	Completed	Concrete Corp CC
Lynnwood Glen, Erf 677	2018	Completed	Taljaard Meyer & Storm Inc.
Lynnwood, Erf 369	2016	Completed	Salamus Properties

Lynnwood, Erf 522	2016	Completed	Safari Holdings (Pty) Ltd
Alphenpark, Erf 75	2016	Completed	Mannamo Residence Trust
Silverton Ext. 11, Erf 1477	2016	Completed	Private Individual
Menlo Park, Erf 233	2016	Current	Benfranco Development (Pty) Ltd
Ashlea Gardens, Erf 62, and 63	2016	Completed	Tario 639 (Pty) Ltd
Menlo Park, Erf 541	2016	Completed	Numbinix (Pty) Ltd
Queenswood, Erf 582	2021	Completed	Stavager Properties (Pty) Ltd
Queenswood, Erf 584	2021	Completed	Aardal Properties (Pty) Ltd

REZONING

Kwa Guqu Ext 1, Erf 8780, eMalahleni Local Municipality	2022	Current	Rezoning
Menlo Park, Remainder of Erf 287	2022	Current	Private Individual
Val-de Grace, Erven 249 and 250	2022	Current	Nulane Investments 285 (Pty) Ltd
Menlo Park, Erf 384	2022	Current	HD Construction
Soshanguve TT, Portions 1 and 2 of Erf 176	2022	Current	Sunset Point Properties 191 CC
Rosslyn Ext 1, Erven 128, 129 and 75	2022	Current	The South African Breweries (Pty) Ltd
Brooklyn, Erven 558 and 560	2022	Current	Private Individual
Waterkloof, Remainder of Erf 571	2022	Current	Private Individual
Brooklyn, Portion 1 of Erf 57	2022	Current	Homecorp Developments SA (Pty) Ltd
Waterkloof Ridge, Remainder of Erf 937	2022	Current	Enosis Properties (Pty) Ltd
Hazelwood, Erf 54	2022	Current	Alma Trading CC
Hazelwood, Portion 1 of Erf 9	2022	Current	Winter Night Investments 172 (Pty) Ltd
Hatfield, Erf 752	2022	Current	TiAuto Investments
Hazelwood, Erf 160	2022	Current	The Club Retail Park (Pty) Ltd
Moreletapark, Erf 323	2021	Current	KCW Holdings (Pty) Ltd
Hazelwood, Erven 3, 150 and 161	2021	Current	The Club Retail Park (Pty) Ltd
Kirkney Ext 28, Erf 795	2021	Completed	Coca-Cola Beverages SA (Pty) Ltd
Booyens, Portions 3 and 4 of Erf 98	2021	Completed	Coca-Cola Beverages SA (Pty) Ltd
Hofontein 399 IS, Portion 6 (Portion of Portion 4)	2021	Current	Hifos (Pty) Ltd
Moreletapark Ext 9, Erven 1301 and 1302	2021	Current	Noag se Direkliniek CC
Hazelwood, Erf 8	2021	Completed	The Club Retail Park (Pty) Ltd
Silverton, Erf 1605	2021	Current	Private Individual
Lynnwood, Portion 13 of Erf 696	2021	Current	Coolstream Services (Pty) Ltd

Eldoraigine Ext 42, Erf 4641	2021	Current	Private Individual
Equestria Ext 99, Portion 1 of Erf 1629	2021	Current	Christian Revival Church
Waterkloof, Erf 684	2021	Completed	PIF Properties (Pty) Ltd
Pretoria North, Erf 373, Remainder of Erf 355, Remainder of Erf 354, Portion 1 of Erf 354, and Remainder of Erf 372	2021	Current	New Day Properties CC
Garsfontein Ext 2, Erven 746 to 750	2021	Current	Private Individual
Menlo Park, Remainder of Erven 505, and Portion 1 of Erf 930	2021	Current	Canyon Springs Investments 173 (Pty) Ltd
Proclamation Hill, Erf 542	2021	Current	Erf 542 Proclamation Hill (Pty) Ltd
Constantia Park Ext 3, Erf 881	2021	Current	Realtime Investments 165 CC
Moreletapark Ext 2, Portion 127 of Erf 1418	2020	Completed	Private Individual
Pretoria, Remainder of Erf 111	2020	Completed	Propaganda Holdings
Sable Hills Waterfront Estate, Erf 312	2020	Completed	Sable Hills Waterfront Estate HOA
Bryanston Ext 7, Portion 1 of Erf 5583	2020	Completed	The Talk Shop Trust
Menlo Park, Portion 1 of Erf 224	2020	Completed	Private Individual
Hazelwood, Erven 3 and 161	2020	Current	The Club Retail Park (Pty) Ltd
Brendwood Park Agricultural Holdings, Holding 51 and Rietpan, Portion 135	2020	Completed	Namlog
Hazelwood, Erf 25	2020	Current	Toitco (Pty) Ltd
Hatfield, Erf 669	2020	Current	Hatfield JV
Silverton, Remainder of Erf 1958	2020	Completed	Private Individual
Garsfontein Ext 8, Erven 2182 to 2184	2020	Current	Achorprops 158 (Pty) Ltd
Equestria Ext 133, Erven 900 and 901	2020	Current	Christian Revival Church
Soweto (Naledi) Part of the Remainder	2020	Current	Impande Consulting Engineers
Wynberg (Triangle), Erf 183 and 184	2020	Current	Impande Consulting Engineers
Harrismith, Erf 459	2020	Current	Mobile Telephone Networks (MTN)
Waterkloof, Remainder of Erf 707	2020	Completed	PMP Property Trust
Lynnwood, Portion 1 of Erf 121	2020	Completed	Lynnwood Trust & Basson Familie trust
Mnandi Agricultural Holdings, Holding 140	2019	Current	Hazgar (Pty) Ltd
Muckleneuk, Remainders of Erf 352	2019	Current	Falcon Suppliers (Pty) Ltd
Wonderboom South, Remainder of Erf 1096	2019	Completed	Private Individual
Mooiplaats 367 JR, Portion 374	2019	Current	SA Police Services
Montana Tuine Ext 67, Erven 1773 to 1775	2019	Completed	Lumibiz (Pty) Ltd
Bedworth Park, Vereeniging, Erf 52	2019	Completed	Private Individual
Waterkloof Heights, Erf 217	2019	Current	Valozone 65 CC

Heuweloord Ext 4, Erf 1685	2019	Current	Private Individual
Lynnwood Glen, Erf 2	2019	Completed	Drastion CC
Soshanguve District Hospital, Portion 1 of Erf 1266	2019	Current	COEGA
Alphenpark, Erf 25	2019	Completed	Private Individual
Halfway House Ext 37, Erf 849	2019	Completed	Project Works
Parkhurst, Erven 1982 and 1984	2019	Current	Zelpy 1497 (Pty) Ltd
Soshanguve East Ext 10, Erf 7502	2019	Completed	Sosh Varsity Lodge
Erasmuskloof, Erf 30	2019	Current	Ultratech Building & Civils
Philip Nel Park, Remainder of Erf 16	2019	Completed	TUT Varsity Lodge (Pty) Ltd
Sunnyside, Erf 1126	2019	Completed	Private Individual
Wierdapark, Erven 1493 and 1494	2018	Current	Audit BEE Consult
Lynnwood, Erf 46	2018	Completed	Private Individual
Menlo Park, Erf 243	2018	Completed	Marko Kruger Familie Trust
Menlo Park, Erf 414	2018	Completed	CDT Homes (Pty) Ltd
Maroelana, Erf 84	2018	Current	Private Individual
Welgedacht 74-IR, Portion of Remainder	2018	Current	Danie van Wyk Familie Trust
Waterkloof Ridge, Erf 277	2018	Completed	Nanox Architects Trust
Constantia Park, Erf 242	2018	Current	Rey's Gymnastic
Westdene, Erf 13	2018	Completed	Boabab (Pty) Ltd
Ferndale, Remainder of Erf 1875	2018	Completed	Themy Style SA CC
Queenstown, Erf 13120	2018	Current	Private Individual
Garsfontein Ext. 8, Erf 1984	2018	Completed	Mentz 380 (Pty) Ltd
Boksburg, Erven 642 to 646 and 1574 to 1576	2018	Completed	KWP Create Architects
Waterkloof, Erf 1187	2018	Current	Quorum Property Group
Lynnwood, Erf 1064 (Safari Office Park)	2018	Current	Safari Investments
Menlo Park, Remainder of Erf 604	2018	Completed	Concrete Corp CC
Morningside Ext 105, Erf 1083	2018	Completed	Full Output 1041 CC
Mayville, Portion of Erf 250	2018	Completed	Advidata Trading 12 CC
Soshanguve Block L, Erf 3110	2018	Current	Private Individual
Secunda Ext 13, Portion 5 of Erf 8464	2018	Completed	Suymar Beleggings
Brooklyn, Portion 1 of Erf 204	2018	Completed	Private Individual
Menlo Park, Erf 430	2018	Completed	CDT Homes (Pty) Ltd
Lynnwood Glen, Erf 353	2018	Current	Private Individual

Lynnwood Glen, Erf 677	2018	Completed	Taljaard Meyer & Storm Inc.
Brooklyn, Erf 4/790	2016	Completed	Private Individual
Rietondale, Erf 20/496	2016	Completed	PAM Fabricators (Pty) Ltd
Yzervarkfontein 194-IR, Remainder	2016	Completed	Porcupine Investments (Pty) Ltd
Waltloo, Erf 2/114	2016	Completed	Kantey & Templer Consulting Engineers (on behalf of Total South Africa)
Monument Park, Erf 371	2016	Completed	Private Individual
Jan Niemandpark, Erf R/3/110	2016	Completed	Moon Cellular CC
Atteridgeville Ext. 5, Erf 9045	2016	Completed	Safari Investments (Pty) Ltd
Atteridgeville Ext. 5, Erf 9044	2016	Completed	Safari Investments (Pty) Ltd
Atteridgeville Ext. 5, Erf 9043	2016	Completed	Safari Investments (Pty) Ltd
Hazelwood, Erven 99, 100 and 101	2016	Current	Pohl and Maritz (Pty) Ltd
Pretoria - Christoffel Street	2016	Completed	TMM Rental (Pty) Ltd
Menlo Park, Erf 233	2016	Current	Benfranco Development (Pty) Ltd
Ashlea Gardens, Erf 62, and Erf 63	2016	Completed	Tario 639 (Pty) Ltd
Menlo Park, Erf 541	2016	Current	Numbinix (Pty) Ltd
Silver Lakes, Erf 1727	2016	Completed	Private Individual
Silver Lakes, Erf 1727	2016	Completed	Private Individual
Ashlea Gardens, Erf 206	2015	Completed	Key Spirit Developments (Pty) Ltd
Pretoria, Erf 2598	2015	Completed	Yeast City Housing
Brooklyn, Remainder of Erf 202	2015	Completed	Quick Leap Investments (Pty) Ltd
Atteridgeville, Erven 16249 and 16250 (Erf 16251),	2015	Completed	Safari Investments (Pty) Ltd
Arcadia, Erven 1/502, R/502, 1/505, R/505 and 1/1028	2015	Completed	Tri-Star Development Services (Pty) Ltd
Menlo Park, Erf 539	2014	Completed	Jodicel (Pty) Ltd
Mayville, Remainder of Erf 93	2014	Completed	Erf 93 Mayville (Pty) Ltd
Pretoria, Erf 3311	2014	Completed	Barloworld Auto (Pty) Ltd
Mamelodi Ext. 5, Erf 29355	2014	Completed	Vharanani (on behalf of the City of Tshwane Metropolitan Municipality)
Mamelodi Ext. 5, Erf 29355	2014	Completed	Vharanani (on behalf of the City of Tshwane Metropolitan Municipality)
Devland Ext. 2, Erven 88, 89, 90 and 884	2013	Completed	The South African Breweries
Pretoria, Erf 3020	2012	Completed	Yeast City Housing
Doornfontein, Erf 355 (356, 357, 396, 398, 632 and 670)	2012	Completed	Mobile Telephone Networks (Pty) Ltd (MTN)
Secunda, Erven 8296 and 8318	2011	Completed	Purple Plum 101 (Pty Ltd)
Secunda, Erven 8296 and 8318	2011	Completed	Purple Plum 101 (Pty Ltd)

SUBDIVISION

Rosslyn Ext 1, Erven 128, 129 and 75	2022	Current	The South African Breweries (Pty) Ltd
Waterkloof Ridge, Remainder of Erf 937	2022	Current	Enosis Properties (Pty) Ltd
Yzervarkfontein 194 IR, Remainder	2022	Current	Arvum Fresh (Pty) Ltd
Zandfontein 326 JR, Portion 514	2021	Current	Private Individual
Erasmus, Erf 1951	2021	Current	Aftreeoord Eiendoms Trust
Waterkloof, Erf 684	2021	Completed	PIF Properties (Pty) Ltd
Menlo Park, Portion 1 of Erf 224	2020	Current	Private Individual
Lynnwood, Erf 1082	2020	Current	Emikamix (Pty) Ltd
Driehoek 572-IS, Remainder of farm	2020	Current	Suymar Beleggings CC
Equestria Ext 133, Erven 900 & 901	2020	Current	Christian Revival Church
Derdepoort 326-JR, Portion 514	2020	Current	Pretoria Boedels MKPY (BPK)
Waterkloof, Erf 699	2019	Completed	Pro Direct Investments 137 (Pty) Ltd
Derdepoort 326-JR, Portion 110	2019	Completed	Private Individual
Sjambok Zijn Oudekraal 258 JR	2019	Current	Maponya Investment Holding
Waterkloof Heights, Erf 217	2019	Completed	Valozone 65 CC
Mabopane-C, Erf 1627	2019	Completed	Association
Erasmuskloof, Erf 30	2019	Current	Ultratech Building & Civils
Lynnwood, Erf 46	2018	Completed	Private Individual
Krokodilspruit 290-JR, portion 91 & 92	2018	Completed	Private Individual
Roodeplaat 293-JR, Remainder of Portion 293	2018	Current	Private Individual
Lynnwood Glen, Erf 677	2018	Completed	Taljaard Meyer & Storm Inc.

TOWNSHIP ESTABLISHMENT

Nooitgedacht 300-JS, Portion 143, eMalahleni Local Municipality	2022	Current	GAP Infrastructure Corporation
Nooitgedacht 300-JS, Portion 30, eMalahleni Local Municipality	2022	Current	GAP Infrastructure Corporation
Nooitgedacht 300-JS, Remainder of Portion 4, eMalahleni Local Municipality	2022	Current	GAP Infrastructure Corporation
Witfontein, Portion 355 (Klerksoord Holding 151)	2022	Current	Private Individual
Nooitgedacht 300 JS, Remainder of Portion 5, Portion 16, and Portion 68 to 74	2022	Current	GAP Infrastructure Corporation (GIC)
Die Wilgers Ext 76	2021	Current	Goldhyde Investments (Pty) Ltd
Hartebeestfontein 324-JR, Portions 170 and 171	2021	Current	Premar Propco (Pty) Ltd

De Wagendrift 417-JR, Portion 79	2020	Current	City of Tshwane Metropolitan Municipality
Leeuwfontein Ext 27	2020	Current	Africa Wise Developments (Pty) Ltd
Mabopane Ext. 12	2019	Completed	City of Tshwane Metropolitan Municipality
Amandasig Ext 86	2019	Current	Ryn Gold Money CC
Leeukraal 92 JR, Part of Remainder of Portion 2 (Marokolong Basin 1)	2019	Current	City of Tshwane: Housing and Human Settlements
Maroeladal Ext 72	2018	Completed	Keyspirit Developments (Pty) Ltd
Kameeldrift Ext 41	2018	Current	DC Worx
Standerton Ex. 10	2018	Current	Sky Village Properties CC
Equestria Ext 274	2018	Current	Private Individual
Eldorette Ext 54	2018	Completed	Cosyspro (Pty) Ltd
Krugersdorp Ext.4	2017	Completed	Matlong
Lawley Ext. 3	2017	Completed	Bagale Consulting (Pty) Ltd
Middelburg Ext. 52	2016	Completed	Private Individual
Middelburg Ext. 40	2016	Completed	Private Individual
Eldorette Ext. 53	2016	Completed	Cosyspro (Pty) Ltd.
Pienaarspoort Ext. 21	2016	Current	The City of Tshwane Metropolitan Municipality
Pienaarspoort Ext. 20	2016	Current	Blackhead Consulting (Pty) Ltd. (on behalf of the City of Tshwane)
Mabopane Ext. 12	2015	Completed	The City of Tshwane Metropolitan Municipality
Silverton Ext. 66 (Hartebeestpoort 328-JR, Part of Portion 194)	2015	Completed	Lakhanya Quantity Surveyors CC (on behalf of PRASA)
Montana Ext. 182	2015	Completed	Van der Watt Familie Trust
Booyens Ext. 4	2014	Completed	City of Tshwane Metropolitan Municipality
Luipaardsvlei Ext. 6	2014	Completed	MIH Projects (Pty) Ltd
Delagoa - Phase 2	2011	Completed	Mavilone Property and Investments CC
Tanganani Ext.14	2010	Completed	Nanza Consulting (on behalf of the Gauteng Department of Human Settlements)

STRATEGIC SPATIAL PLANNING

CORRIDOR DEVELOPMENT

N14 Corridor Development	2015	Completed	MIH Projects (Pty) Ltd
--------------------------	------	-----------	------------------------

ENVIRONMENTAL MANAGEMENT FRAMEWORK

Umkhanyakude and uThukela	2012	Completed	Nemai Consulting CC
---------------------------	------	-----------	---------------------

Umkhanyakude District Municipality	2012	Completed	Nemai Consulting CC
------------------------------------	------	-----------	---------------------

PLANNING AND LAND USE GUIDANCE

Aerotropolis	2012	Completed	Ekurhuleni Metropolitan Municipality
--------------	------	-----------	--------------------------------------

PRELIMINARY DISCUSSION

RSDF Planning, Region 4	2016	Completed	Century Property Development (Pty)Ltd
-------------------------	------	-----------	---------------------------------------

REGIONAL SPATIAL DEVELOPMENT FRAMEWORK OR REVIEW THEREOF

Knopjeslaagte	2016	Completed	Napaj Property Investment and Development
Aerotropolis - Region A	2011	Completed	Ekurhuleni Metropolitan Municipality

SPATIAL DEVELOPMENT FRAMEWORK OR REVIEW THEREOF

Bronkhorstspuit, Zithobeni, Rethabiseng, Ekandustria	2013	Completed	City of Tshwane Metropolitan Municipality
Waterberg District Municipality	2012	Completed	Waterberg District Municipality

SPATIAL PLANNING

Mogalakwena Mine	2022	Current	CSIR
Bakenberg, Rebene and Marken	2022	Current	CSIR
Botshabelo, Thaba-Nchu Integration Node	2022	Current	Mahlori Development Consultants
Anglo American Platinum	2012	Completed	Anglo American Platinum

URBAN DESIGN

CORRIDOR DESIGN FRAMEWORK

West Mining Belt Road Master Plan	2019	Completed	HHO Consulting Engineers (Pty) Ltd
City of Joburg Corridors of Freedom	2016	Completed	Gibb Engineering and Architecture

INTEGRATED STRATEGIES POSITIONING

Gauteng Industrial Development Zone	2016	Completed	Urban-Econ Development Economists
-------------------------------------	------	-----------	-----------------------------------

REGENERATION PLAN

Botshabelo-Thaba Nchu	2023	Current	Mahlori Development Consultants
-----------------------	------	---------	---------------------------------

Stilfontein and Khuma	2016	Completed	The South African Local Government Association (SALGA)
RE-DEVELOPMENT PLAN			
Sebokeng Hostels	2017	Completed	ADI Engineering
Saulsville Hostels	2016	Completed	MIH Projects (Pty) Ltd
Mamelodi Hostels	2015	Completed	ASEDA Consulting Engineers (The City of Tshwane Metropolitan Municipality)
PRECINCT PLAN			
De Deur Estates, Remainder of Portion 9, Erf 216	2023	Current	MIH Projects
Mogale City CBD	2021	Current	Bigen Africa Services (Pty) Ltd
West Rand Precinct Plans	2019	Completed	Department of Rural Development & Land Reform
Northern Gateway, City of Tshwane	2016	Completed	The City of Tshwane Metropolitan Municipality
URBAN DESIGN FRAMEWORK			
Garsfontein farm 374-JR, Remainders of Portions 279 & 285	2021	Current	Context Property Solutions (Pty) Ltd
Gauteng Rapid Land Release Programme: Stage 2 - Eloffspark	2020	Completed	Bigen Africa Services (Pty) Ltd
Gauteng Rapid Release Programme: Stage 2 - Eldorado Park Ext, 7 - Erf 6084	2020	Completed	Bigen Africa Services (Pty) Ltd
Gauteng Rapid Release Programme: Eersterust Extension 6, Erf 4144	2020	Completed	Bigen Africa Services (Pty) Ltd
Gauteng Rapid Release Programme: Eersterust Extension 6, Remainder of Erf 4298	2020	Completed	Bigen Africa Services (Pty) Ltd
Gauteng Rapid Release Programme: Eersterust Extension 6, Erf 4812	2020	Completed	Bigen Africa Services (Pty) Ltd
Gauteng Rapid Release Programme: Eersterust Extension 6, Erf 4461	2020	Completed	Bigen Africa Services (Pty) Ltd
Gauteng Rapid Release Programme: Unitas Extension 16	2020	Completed	Phumaf Engineering Solutions
Gauteng Rapid Release Programme: Eldorado Park, Project C	2020	Completed	Phumaf Engineering Solutions
Gauteng Rapid Release Programme: Eldorado Park Extension 6	2020	Completed	Phumaf Engineering Solutions
Gauteng Rapid Land Release Programme: Evaton, Project F	2019	Completed	Phumaf Holdings
Gauteng Rapid Land Release Programme: Evaton, Project G	2019	Completed	Phumaf Holdings
Gauteng Rapid Land Release Programme: Evaton, Project H	2019	Completed	Phumaf Holdings
Gauteng Rapid Land Release Programme: Evaton, Project I	2019	Completed	Phumaf Holdings
Gauteng Rapid Land Release Programme: Brakpan Ext 12	2019	Completed	Phumaf Holdings
Gauteng Rapid Land Release Programme: Bryanston Ext 3	2019	Completed	Phumaf Holdings
Estoire Urban Design Framework	2018	Completed	Housing Development Agency (HDA)
Tswaing Mixed Use Development, Hammanskaraal	2018	Current	Bigen Africa Services (Pty) Ltd

Northern Gateway, City of Tshwane	2016	Completed	The City of Tshwane Metropolitan Municipality
Tswaing High Level Urban Design Framework - Stinkwater	2016	Completed	Dijalo Property Development
Sasolburg Extensions	2015	Completed	Housing Development Agency (HDA)
Bakubung	2015	Completed	Bigen Africa Services (Pty) Ltd
Bethlehem - Bakenpark Ext. 5 and 7	2015	Completed	Housing Development Agency (HDA)
Krugersdorp Station	2014	Completed	MIH Projects (Pty) Ltd
Platinum Village	2013	Completed	Safari Investments (Pty) Ltd
Winterveldt	2013	Completed	Gauteng Department of Human Settlements
Krugersdorp Central Business District	2012	Completed	Gauteng Department of Human Settlements
Zandspruit	2012	Completed	Gauteng Department of Human Settlements
Lotus Garden West	2011	Completed	Skhevo Consulting CC (on behalf of City of Tshwane)

PROPERTY DEVELOPMENT

CONCEPT REPORT

Development Bank of Southern Africa (DBSA) - Cities Project Preparation Facility	2015	Completed	Development Bank of Southern Africa (DBSA)
--	------	-----------	--

DEVELOPMENT ASSESSMENT

Gauteng Province Land Assembly	2023	Current	Bahlaphing Consultings (Pty) Ltd
Menlo Park, Remainder of Erf 287	2022	Current	Private Individual
Mogale City CBD Sub-Precinct Business Case	2021	Current	Bigen Africa Services (Pty) Ltd
Isando, Remainder of Erf 632	2019	Completed	South African Breweries (Pty) Ltd
Informal Settlements Upgrading Plans in Region 04	2018	Completed	MIH Projects
Madibeng National Upgrading Support Program (NUSP)	2014	Completed	Bigen Africa Services (Pty) Ltd (on behalf of the National Upgrading Support Program)
Tshwane National Upgrading Support Program (NUSP)	2014	Completed	Bigen Africa Services (Pty) Ltd (on behalf of the National Upgrading Support Program)
Rustenburg National Upgrading Support Program (NUSP)	2014	Completed	Bigen Africa Services (Pty) Ltd (on behalf of the National Upgrading Support Program)

DUE DILIGENCE REPORT

Waterval 150-IR, Remainder of Portion 25	2022	Completed	Isebenza Group
Roodekop Ext 37, Erven 8604 and 8605	2022	Completed	Isebenza Group
Graceview Est 4	2022	Completed	Isebenza Group

Rietfontein 128-IR, Portion of Remainder of Portion 96	2022	Completed	Isebenza Group
Witkop 180-IR, Remainder of Portion 10 (A portion of portion 4)	2022	Completed	Isebenza Group
Collins Chabane Local Municipality Industrial	2022	Current	Ntiyis Consulting Group
Sinoville Ext. 20, Erf 2405	2022	Current	Chrismoer Trust
Golf View Agricultural Holdings Midvaal, Holding 152	2021	Completed	Blue Mystique Property Investments (Pty) Ltd
Gauteng Rapid Land Release: Stage 1 - Package E - (Various Properties)	2021	Completed	Bigen Africa Services (Pty) Ltd
Gauteng Rapid Land Release Programme: Stage 1 - Package F - (Various Properties)	2021	Completed	Bigen Africa Services (Pty) Ltd
Gauteng Rapid Land Release Programme: Stage 1, Package D	2020	Completed	Bigen Africa Services (Pty) Ltd
Itireleng Residence	2019	Completed	MIH Projects
Gauteng Rapid Release of Land Programme	2019	Completed	Bigen Africa Services (Pty) Ltd
Lotus Gardens, Erven 7547 and 7548	2018	Current	Neo Dimension Architects
Roodekop Ext 12	2018	Current	AbInBev (Pty) Ltd
Bardene, Erf 1169	2016	Current	Namibia Logistics
Stephan Grabouw - Various Properties	2016	Completed	Private Individual
Westbury Ext. 3, Erven 421, 422 and 74/462	2016	Completed	Indigo Khulani Group (Pty) Ltd.
Malvern, Erven 1934, 1935 and 1936	2015	Completed	ZAS Architects and Planners (on behalf of the Gauteng Department of Infrastructure and Development)
Tshwane Bus Rapid Transit System (BRT) - Belle Ombre Depot	2014	Completed	Royal Haskoning DHV
Tshwane Bus Rapid Transit System (BRT) - Rainbow Junction Depot	2014	Completed	Royal Haskoning DHV
Sasol - Properties	2014	Current	SASOL (Pty) Ltd
Arcadia, Erf R/1159	2014	Completed	Tristar Development Services (Pty) Ltd
Abdur Moosa - Target Sites	2013	Completed	Private Individual
Pretoria, Erf 3473	2012	Completed	Foodcorp Milling
Prasa - Etwatwa	2011	Completed	Sephaku Holdings (Pty) Ltd

LAND AUDIT REPORT

Lenasia Ext. 13	2010	Completed	Gauteng Department of Human Settlements
-----------------	------	-----------	---

PROPERTY INVESTIGATION

Noordwyk Ext. 55	2015	Completed	Private Individual
Wapadrand Ext. 43 (Portion 158, The Willows 340-JR)	2015	Completed	Enrok Trust
Daveyton Township	2014	Completed	The Ekurhuleni Metropolitan Municipality - City Development Department (Kempton Park)

Pankoppen 36-JR	2013	Completed	Vergenoeg Mining
-----------------	------	-----------	------------------

SITE CLEARANCE INVESTIGATION

Pretoria North, Portion 1 of Erf 943	2018	Current	Testa Properties
Ashlea Gardens. Erven 62 and 63	2018	Current	Private Individual
Scientia 627-JR, Portion 3	2013	Completed	National Department of Public Works
Gauteng Schools Project	2013	Completed	Basil Read (Pty) Ltd
Thabazimbi Training Institute	2011	Completed	National Department of Public Works

POLICY FORMULATION AND RESEARCH

GUIDELINES FOR LAND USE MANAGEMENT SYSTEMS

Steve Tshwete Local Municipality Densification & Compaction Policy for Urban Areas	2019	Completed	Steve Tshwete Local Municipality
LUMS Guidelines	2017	Completed	The South African Local Government Association (SALGA)

PLANNING AND LAYOUT STANDARDS

Highveld Ext. 8, Erf 714	2016	Current	Centurion Spar
--------------------------	------	---------	----------------

RESEARCH

South African Cities Network - Transit Oriented Development Research	2016	Completed	The South African Property Owners Association (SAPOA)
---	------	-----------	--

REVITALIZATION

Tshwane Inner City Revitalization Strategy: Strategic Intervention and Implementation	2013	Completed	City of Tshwane Metropolitan Municipality
---	------	-----------	--

UPGRADING STRATEGY

Madibeng and Tshwane Informal Settlement Upgrading Strategy	2014	Completed	Bigen Africa Services (Pty) Ltd
--	------	-----------	---------------------------------

POLICY FORMULATION

Tshwane Sustainable Human Settlements Plan	2020	Current	City of Tshwane Metropolitan Municipality
---	------	---------	--



CLIENT	CONTACT NUMBER
Gauteng Department of Housing	082 887 6602
Mobile Telephone Networks (MTN)	083 212 8029
South African Breweries (SAB)	011 881 8667
Nestlé South Africa	082 801 0521
Vukani Gaming Corporation	011 268 6420
Barloworld Limited	082 448 4557
Safari Investments Limited	012 365 1881
SASOL	011 889 7997



MR. DEON BESTER

DIRECTOR | PROFESSIONAL PLANNER

DATE OF BIRTH: 31 MAY 1960

YEARS OF EXPERIENCE: 32 YEARS

**1. ACADEMIC QUALIFICATIONS:**

- University of Pretoria | Bachelor Degree in Town and Regional Planning, 1991
- Tshwane University of Technology | National Diploma in Public Health, 1984

2. PROFESSIONAL AFFILIATIONS:

- South African Council for Town and Regional Planners (SACPLAN) | Professional Planner Reg. No. A/816/1995
- South African Planning Institute (SAPI) Reg. No. 10174

3. CAREER HISTORY

Mr. Bester started his town-planning career in 1991 as an assistant Town Planner with Metroplan. By the end of 1995 he was promoted to Professional Planner and later became a Director of Metroplan.

4. EXPERIENCE:

In the 31 years of Mr. Besters' involvement in the field of town-planning, he gained extensive experience in a wide variety of town-planning related matters such as land use management, strategic spatial planning, urban design, and property development. As an experienced Town-planner, he has a successful track record of numerous completed developments resulting from applications for rezoning and/or township establishment undertaken on behalf of governmental departments, mining groups and private developers. He takes the lead in projects which are mostly focused on higher density developments with the overall aim of creating a variety of affordable housing typologies. Mr. Bester is also actively involved with numerous formalisation and upgrading projects that provides accommodation to previously disadvantaged communities. In addition to his role as Professional Planner, Mr. Bester, plays a pivotal role in the financial operations of the organisation and contributes to the efficiency of the day-to-day activities of the Company.

5. CONTACT DETAILS:

Telephone: 012 804 2522 | 083 291 0397 | E-mail: deonb@metroplan.net

MR. HENNING JOHANNES VILJOEN DU PLESSIS (VILJOEN)

DIRECTOR | PROFESSIONAL PLANNER

DATE OF BIRTH: 29 OCTOBER 1971

YEARS OF EXPERIENCE: 29 YEARS

**1. ACADEMIC QUALIFICATIONS:**

- University of Pretoria | Bachelor Degree in Town and Regional Planning, 1993
- University of Pretoria | MSc (Real Estate), 2010

2. PROFESSIONAL AFFILIATIONS:

- South African Council for Town and Regional Planners (SACPLAN) | Professional Planner Reg. No. A/1015/1998
- South African Planning Institute (SAPI) Reg. No. 10559

3. CAREER HISTORY

Mr. du Plessis started his town-planning career in 1994 as a Candidate Town Planner with Metroplan. He registered as a Professional Planner at SACPLAN in 1998, during which year he also became a Director of Metroplan.

4. EXPERIENCE:

Mr. du Plessis has extensive experience in a wide range of planning matters covering strategic and spatial planning frameworks, town planning schemes, land use management, layout design, compilation of regulatory guidelines and planning policy formulation. Mr. du Plessis is actively involved in land development applications and development analysis for both the private and public sector. Mr. du Plessis served, and is still serving, in a planning advisory capacity for the Department of Public Works, MTN, ABInbey (formerly SAB), Nestlé and SASOL and is representing these companies and institutions in planning and development related matters. In addition to his role as Professional Planner, Mr. du Plessis plays a pivotal role in the managing of the organisation and contributes to the efficiency of the day-to-day activities of the Company.

5. CONTACT DETAILS:

Telephone: 012 804 2522 | 082 887 1767 | E-mail: viljoen@metroplan.net

DR. MARIA DOROTHEA SCHOONRAAD (MARINDA)

PROFESSIONAL PLANNER | URBAN DESIGNER

DATE OF BIRTH: 29 JUNE 1966

YEARS OF EXPERIENCE: 35 YEARS



1. ACADEMIC QUALIFICATIONS:

- University of Pretoria | Bachelor Degree in Town and Regional Planning, 1987
- University of the Witwatersrand | Magister Degree in Urban Design, 1995
- Delft University of Technology, the Netherlands | PhD in Architecture and Urbanism, 2004

2. PROFESSIONAL AFFILIATIONS:

- South African Council for Town and Regional Planners (SACPLAN) | Professional Planner Reg. No. A/1348/2010
- Urban Design Institute of South Africa (UDISA) Reg. No. S003

3. CAREER HISTORY

- Town Planner | Pretoria City Council, 1988 – 1991
- Lecturer | Department of Town and Regional Planning | University of Pretoria, 1992 – 2004
- Dr Schoonraad joined Metroplan Pretoria during 2004

4. EXPERIENCE:

Dr Schoonraad has been working as a Town Planner, Urban Designer and Researcher for more than thirty years, dealing with a variety of aspects from land-use management, layout plans and spatial development frameworks to strategic plans, social housing and community development in Southern Africa, Europe, and Latin America. She takes the lead on all Urban Design projects undertaken by Metroplan and the extent and nature of the projects that she has been involved in contributed to her extended knowledge and understanding of town-planning and urban design related matters.

5. CONTACT DETAILS:

Telephone: 012 804 2522 | 082 391 9440 | E-mail: marinda@metroplan.net

MRS. INA (VAN ZYL) JACOBS

PROFESSIONAL PLANNER

DATE OF BIRTH: 5 APRIL 1983

YEARS OF EXPERIENCE: 17 YEARS



1. ACADEMIC QUALIFICATIONS:

University of Pretoria | Bachelor Degree in Town and Regional Planning, 2006

2. PROFESSIONAL AFFILIATIONS:

South African Council for Town and Regional Planners (SACPLAN) | Professional Planner Reg. No. A/175/2010

3. CAREER HISTORY

Mrs. Jacobs started her town planning career in September 2005 as a Town Planner in training with Metroplan. On completion of her bachelor's degree in Town Planning she was formally appointed as Candidate Town Planner in 2007. She held this post till 2010 where after she was registered with the South African Council for Planners and was subsequently promoted to Professional Planner.

4. EXPERIENCE:

Mrs. Jacobs has extensive experience in aspects pertaining to land use management, layout design, land development applications and property investigation for the private and public sector. Mrs. Jacobs is at present actively involved in several formalizations and upgrading projects primarily for the public sector, as well as land development applications, development analyses and property investigations. The extent and nature of the development applications that she has undertaken contributed to her extensive knowledge and understanding of town planning related matters.

Mrs. Jacobs is currently completing her master's degree in Urban Design at the University of Witwatersrand.

5. CONTACT DETAILS:

Telephone: 012 804 2522 | 082 439 2035 | E-mail: ina@metroplan.net

MRS. HARRIET JOUBERT

PLANNING ASSISTANT

DATE OF BIRTH: 31 JULY 1964

YEARS OF EXPERIENCE: 32 YEARS

**1. ACADEMIC QUALIFICATIONS:**

University of Pretoria | Bachelor Degree of Arts and Social Sciences (Education), 1987

2. PROFESSIONAL AFFILIATIONS:

South African Planning Institute (SAPI) Reg. No. 12008

3. CAREER HISTORY

Mrs. Joubert started her career at the former Transvaal Townships Board in 1991, in an administrative capacity. She joined Planpractice (now known as The Practice Group) in 1996 as a Town-planning Assistant. In 2008, she was employed by Metroplan Town Planners and Urban Designers as a Town-planning Assistant.

4. EXPERIENCE:

Mrs. Joubert commenced her town-planning career in the employment of the Gauteng Townships Board, where she gained valuable knowledge in town-planning related matters attending appeal hearings and reporting to the full Board on appeal hearings conducted by Committees of the Townships Board. In the years to follow she benefitted from the exposure of the private sector and applied her experience in a wide variety of town-planning related matters attending to applications for land use change and issues relating to land use management. The extent and nature of the development applications that she has undertaken contributed to her extensive knowledge and understanding of town-planning related matters.

5. CONTACT DETAILS:

Telephone: 012 804 2522 | 071 684 5411 | E-mail: harriet@metroplan.net

MR. REUBEN MENTZ

PROFESSIONAL PLANNER

DATE OF BIRTH: 15 NOVEMBER 1994

YEARS OF EXPERIENCE: 7 YEARS



1. ACADEMIC QUALIFICATIONS:

University of Pretoria | Bachelor Degree in Town and Regional Planning, 2017

2. PROFESSIONAL AFFILIATIONS

South African Council for Town and Regional Planners (SACPLAN) | Professional Planner Reg. No. A/2954/2020

3. CAREER HISTORY

Mr. Mentz started his town-planning career in November 2016 at Metroplan as a student planner and has since been formally appointed as a professional town planner within the firm.

4. EXPERIENCE:

Mr. Mentz specialises in strategic and spatial planning projects and has been involved in numerous projects ranging from Policy Formulation, Precinct Plans, Urban Design Frameworks and Due Diligence Reports. Mr. Mentz acts as the lead draughts person for these projects which also includes 3D modelling and rendering.

Mr Mentz is currently completing his master's degree in Urban Design at the University of Witwatersrand.

5. CONTACT DETAILS:

Telephone: 012 804 2522 | E-mail: reuben@metroplan.net

MR. STEVE MANAMELA

CANDIDATE PLANNER

DATE OF BIRTH: 22 DECEMBER 1992

YEARS OF EXPERIENCE: 5 YEARS

**1. ACADEMIC QUALIFICATIONS:**

University of Johannesburg | National Diploma: Town and Regional Planning, 2019

2. PROFESSIONAL AFFILIATIONS:

South African Council for Town and Regional Planners (SACPLAN) | Candidate Planner Reg. No. C/9025/2019

3. CAREER HISTORY

Mr. Manamela started his town-planning career in January 2018 as a Town-planning student with Metroplan. On completion of his National Diploma in Town-planning he was formally appointed as Assistant Town-planner in 2019. Later in the year after he was registered with the South African Council for Planners and was subsequently promoted to Candidate Town Planner.

4. EXPERIENCE:

Mr. Manamela gained experience in aspects pertaining to land use management, land development applications and property investigation for the private and public sector. Mr. Manamela is at present actively involved in several projects primarily for land development applications, development analyses, upgrading of informal settlements and property investigations. The extent and nature of the development applications that he has undertaken contributed to her extended knowledge and understanding of town-planning related matters.

5. CONTACT DETAILS:Telephone: 012 804 2522 | 076 698 8908 | E-mail: steve@metroplan.net

MS. SIMONÉ OLIVIER

AUTOCAD OPERATOR

DATE OF BIRTH: 1 MARCH 2001

YEARS OF EXPERIENCE: 2 YEARS



1. ACADEMIC QUALIFICATIONS:

- CTU College | Autodesk Certified User: Inventor
- CTU College | Autodesk Certified User: Revit for Architecture
- CTU College | Autodesk Certified User: AutoCAD
- CTU College | Autodesk Certified Professional: Inventor
- CTU College | Autodesk Certified Professional: AutoCAD

2. CAREER HISTORY

Ms. Olivier started her draughting career in 2021 at Metroplan as an AutoCAD Operator.

3. EXPERIENCE:

Ms. Olivier has the required experience to compile various types of plans and drawings using software such as AutoCAD, Revit, and Inventor. In the time period that she will be spending in the town-planning field, she will gain experience in town-planning related subject matters.

4. CONTACT DETAILS:

Telephone: 012 804 2522 | E-mail: simone@metroplan.net

MR. MARTIN THAPELO MODISE

CANDIDATE PLANNER

DATE OF BIRTH: 7 NOVEMBER 1993

YEARS OF EXPERIENCE: 4 YEARS

**1. ACADEMIC QUALIFICATIONS:**

- University of Johannesburg | National Diploma: Town and Regional Planning, 2017
- University of Johannesburg | Btech: Town and Regional Planning, 2018

2. PROFESSIONAL AFFILIATIONS:

South African Council for Town and Regional Planners (SACPLAN) | Candidate Planner Reg. No. C/9372/2021

3. CAREER HISTORY

Mr. Modise started his town-planning career in 2017 as a Student Town-planner with Metroplan. He was formally appointed as Junior Town Planner at the City of Tshwane Metropolitan Environmental Division and Open Space Management and held this position until 2020 where after he was registered with the South African Council for Planners as a Candidate Planner. In 2021, he was formally appointed as a Town Planner (Land Use Manager) at Tshani Consulting CC. Mr Modise held this position till May 2022 where after he was employed Metroplan Town Planners and Urban Designers as a Candidate Town Planner.

4. EXPERIENCE:

Mr. Modise gained experience in aspects pertaining to land use management, land development applications and property investigation for the private and public sector. Mr. Modise is actively involved in Public Participations, projects primarily for land development applications, and property investigations. The extent and nature of the development applications that he has undertaken contributed to his extended knowledge and understanding of town-planning related matters.

CONTACT DETAILS:

Telephone: 012 804 2522 | 078 505 5762 | 067 799 8068 | E-mail: thapelo@metroplan.net